

BBL FLOOR
— Bring Best Life —



JIANGSU BBL HOME TECHNOLOGY COMPANY LIMITED
Address: NO.10 Changhong East Road ,Henglin Town,Wujin District, Changzhou, JS213101,CHINA
Tel: 86-519-68861223
Fax: 86-519-68863336
E-mail: vip@bbfloor.com
www.bblflooring

VINYL FLOORING

BBL FLOOR
— Bring Best Life —

1 0 0 % W A T E R P R O O F

VINYL --- FLOORING



/Company Profile	/05/
/BBL Vinyl Floors Advantage	/07/
/Technical Specification	/09/
/Products Display	
• Dry Back	/11/
• Vinyl Locking	/13/
• Enginnered Vinyl Plank	/15/
• Diamond SPC	/17/
• MSPC	/19/
• Eco Tec	/21/
• Super Protect	/23/
• Super Protect Plus	/25/
• ESP	/27/
• Negative Ion Tec.	/29/
• Litaback	/31/
• Random Width Series	/33/
• Endless	/37/
• Painted Bevel	/39/
• EIR Pattern	/43/
• Wood Pattern	/51/
• Tile Texture	/67/
• Carpet Texture	/79/

VISION

To be the most honorable company in the home building materials industry.

MISSION

Create a healthy and beautiful life worldwide

VALUE

Be faithful
Be hardworking and thrifty
Be modest and prudent
Be innovative



Established in 1991, Jiangsu BBL Home Technology Company Limited (also known as BBL) is located in Changzhou, Jiangsu province, a professional manufacturer of Vinyl Flooring, Laminate Flooring as well as Engineered wood flooring. We have more than 25 years of experience in construction materials and have a good reputation in this field. Our products have been exported more than 128 countries worldwide.



We have implemented a strict and complete quality control system, which ensures that each product can best meet customers' quality requirements. Besides, all of our products have been strictly inspected before shipment. We have attained ISO9001:2008 certification for our management system and we are now using Lean Manufacturing System to improve our efficiency of internal management.



In 2010, BBL set up "Product Research and Developing Department". Jointly with Nanjing Forestry University, BBL has established "BBL Floor Engineering Technology Research and Developing Center". Every 3 days, one new color will be created by this center. This center will develop any new flooring color based on different market's flooring style requirement.



We will insist on our business concept, which is "Following the market need, based on professional marketing, guaranteed by the creditable service" to build BBL as a professional brand and providing satisfactory products and service to clients all over the world. BBL will commit to make "BBL" brand as a world wide known brand both in the international and domestic market for various building materials.





BBL288-2



Exclusive Designs

- Patent protected. All the designs are inspired from customers' requirements.



We use best plasticizer DOTP and 100% virgin material



Environmentally

-No VOC, No Toxin, EO, We use one of the best plasticizer DOTP. We have passed certification of Floorscore, Green Guard Gold and Eurofin's Indoor Air Quality Comfort.



Prevent Termite

-This material is effective to anti termite



Bio

-Based plasticizer is made from 100% organic raw materials.



Water Proof

- When exposed to water, planks will not swell, buckle or lose integrity.



Anti-microbial

-Good in hospitals and schools as well as in kid's nursery rooms.



Locking system

-With 20 years of experiences in profiling. We have the easiest locking system to ensure the strongest pulling strength.

BBL
VINYL FLOORS ADVANTAGE



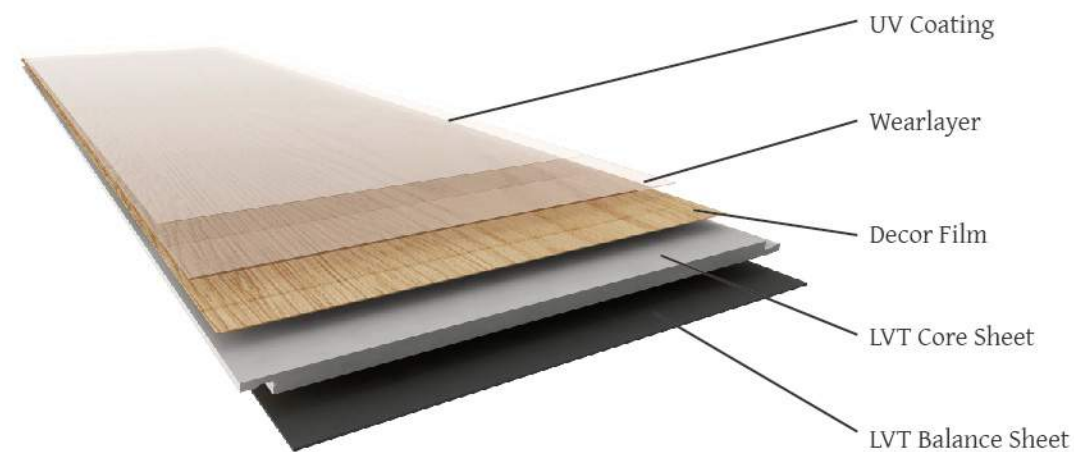
PRO'S AND CON'S OF BBL PRODUCT COMPARE WITH OTHER FLOORS

BBL PRODUCTS								OTHER PRODUCTS		
Features\ Product	Composite Vinyl Floor	Vinyl Locking	Loose lay	Vinyl Plank-dry back	Diamond Vinyl SPC Flooring	Woven LVT	MSPC	Ceramic	Locking LVT with HDF core	Engineered Floor
Materials Cost	Gold	50%Gold & 50%Silver	Gold	Bronze	Gold	Silver	Gold	Silver	50%Gold & 50%Silver	Diamond
Cost for installation	Bronze	Silver	Bronze	Gold	Silver	Gold	Silver	Gold	Silver	Gold
Waterproof	Excellent	Excellent	Excellent	Good	Good	Good	Good	Excellent	Not Good	Not Good
Easy to install	Excellent	Good	Excellent	Not Good	Excellent	Not Good	Excellent	Not Good	Good	Not Good
Easy for replacement	Not Good	Good	Excellent	Not Good	Excellent	Good	Excellent	Not Good	Not Good	Not Good
Quiet performance	Excellent with Cork underlayment	Good	Excellent	Good	Good	Good	Good	Not Good	Not Good	Not Good
Environmentally friendly	Excellent	Excellent	Excellent	Excellent	Good	Excellent	Good	Excellent	Not Good	Not Good
Reuse	Good	Not Good	Excellent	Not Good	Not Good	Not Good	Not Good	Not Good	Good	Good
Recycleble after use	Not Good	Good	Good	Good	Excellent	Good	Good	Not Good	Not Good	Not Good

CHARACTERISTICS	STANDARDS			
	EN	Result	ASTM	Result
Size	EN 427	Pass	ASTM F536	Pass
Overall Thickness	EN428	Pass	ASTM F386	Pass
Wear Layer Thickness	EN429	Pass	ASTM F410	Pass
Dimension Squareness and Straightness	EN427	Pass Squareness:0.18mm Straightness:0.07mm		
Chemical Resistance	EN423	Pass	ASTM F925, ASTM F1344	Pass
Colour Fastness to Artificial Light	EN20105:B02 Method A	Pass, ≥Grade 6	ASTM F1515	Pass
Heat Stability by Color Change			ASTM F1514	Pass
Castor Chair Suitability	EN425	Pass		
Residual Indentation	EN433	Pass,0,06mm	ASTM F1914, ASTM F970	Pass
Abrasion Group	EN660-1/2	Group T	ASTM F510, ASTM D3384	Pass
Impact Resistance			ASTM F1265, ASTM D2632	Pass
Dimensional Stability	EN434	Pass	ASTM F2199	Pass, 0.1%
Sound Reduction	ENISO717-2(△Lw)	2 dB		
Flexibility	EN435 Method A	Pass	ASTM F137	Pass
Slip Resistance	EN13893	Class DS	ASTM D2047-93	Pass
Electrical Resistance	EN1081 Method C	Pass	ASTM F150-06	Pass
Thermal Resistance	EN12664	Pass		
Toxic Element Test	EN71-3	Pass. Not toxic. Does not contain heavy metal and formaldehyde		
Behaviour to Fire	ENISO11925-2 EN13501-1 EN ISO 9239-1	Bf1-S1	ASTM E648-06	Pass/Class1
Smoke Density			ASTM E662	Pass,<450

VINYL LOCKING

BBL Vinyl Locking series combines beautiful and realistic wood and tile patterns with easy locking system. Durable and water-proof, this is a high-end resilient flooring. We provide a vast array of options of colors for your choices. It's suitable to be used at kitchen and bathroom.



Size	936 x 150mm, 1220 x 150mm, 1220 x 180mm 1220 x 228mm, 1500 x 228mm
Thickness	3.2mm, 4.2mm, 5.0mm
Wearlayer	0.1-1.0mm

- UV-coating
- Easy & Strengthened locking system



BBL930L-8



ADVANTAGES

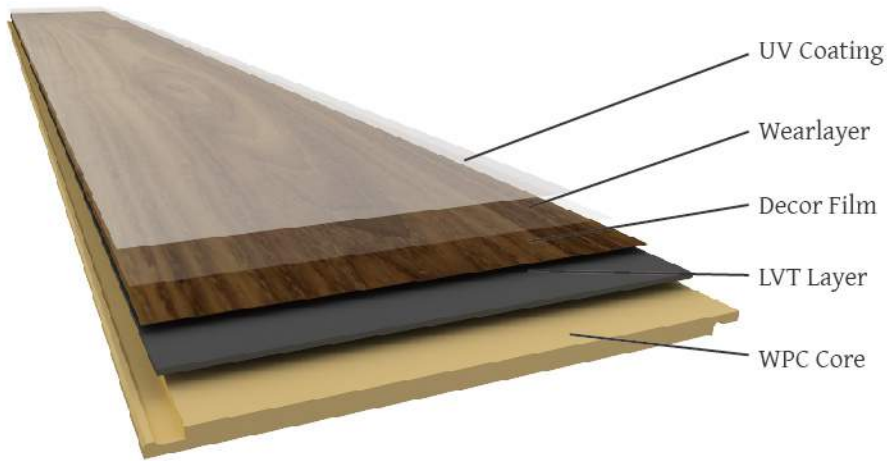
- Water proof, will not swell when exposed to water.
- Easy-to-install with glueless click system.
- Minimal floor prep.
- No need to acclimate the floor.
- Perfect foot-sense (for product with attachment).

BBL908-10

ENGINEERED VINYL PLANK

Composite Vinyl Floors combines the resilience of LVT and stability of composite vinyl core, with very easy click system, inherit the waterproof feature from LVT and WPC, as stable as laminate floor. Cork attachment is available to attain a fantastic quiet effect.

This is a very high end product, more environmentally friendly than laminate floor, as resilient as LVT, waterproof, easy for installation. It's suitable to be used for commercial and residential areas.



Size	1217 x 146mm, 1217 x 178mm, 1500 x 225mm 932 x 146mm, 1803 x 225mm, 596 x 296mm
Thickness	5.5mm, 6mm, 6.5mm, 7.5mm
Wearlayer	0.3-1.0mm

- UV-coating
- EVA & IXPE & Cork attachment available
- Easy & strengthened locking system



ANY ROOM AT,
BELOW OR ABOVE GROUND LEVEL



BATHROOM FRIENDLY



CLICK SYSTEM



PROTECTION



100% WATERPROOF



WARM TO THE TOUCH



ANTI SLIP



EASY CLEAN



CANADIAN PATENT : 2, 939, 954

WHAT IS BBL DIAMOND FLOORING?

BBL Diamond SPC flooring is an upgrade and improvement of LVT and WPC that is manufactured with a rigid stone plastic composite (SPC) core. It is high density core allows it to have greater indentation resistance and dimensional stability than other luxury vinyl.

BBL Diamond flooring is also enhanced with protective polyurethane allowing it to resist scratches and dents. And the product is formaldehyde free, making for a completely safe flooring solution for both residential and public environments.

DIAMOND SPC

- UV Coating
- Wear Layer
 - Excessive wear protection
- Decor film
 - Wide color selection
- SPC core
 - Waterproof core made of highly durable SPC
 - Density of 2000KGS/M3
 - Strong locking system
- Foam Underlayment (optional)
 - Advanced sound reduction
 - Added comfort

NEW
&
IMPROVED

Size	936 x 150mm, 1220 x 150mm, 1220 x 180mm, 1220 x 228mm, 1500 x 228mm, 1800 x 228mm
Thickness	3.2mm, 4.2mm, 5.0mm, 6mm, 7mm, 8mm
Wearlayer	0.1-1.0mm

•UV-coating •EVA & IXPE & Cork attachment available • Easy & strengthened locking system



ANY ROOM AT,
BELOW OR ABOVE GROUND LEVEL



BATHROOM FRIENDLY



CLICK SYSTEM



PROTECTION



100% WATERPROOF



WARM TO THE TOUCH



ANTI SLIP



EASY CLEAN



ADVANTAGES

- Super Anti-Scratch & Wear-resistance
- Water-Proof
- Low VOC- Environmental Friendly
- Anti-Slip for Commercial Area
- Fire-resistance
- Durability & High Stability
- Floating installation system & Minimal Maintenance
- Anti-Bacteria & Anti-insect

MSPC

Melamine Paper on Top of SPC

Super Anti-Scratch SPC

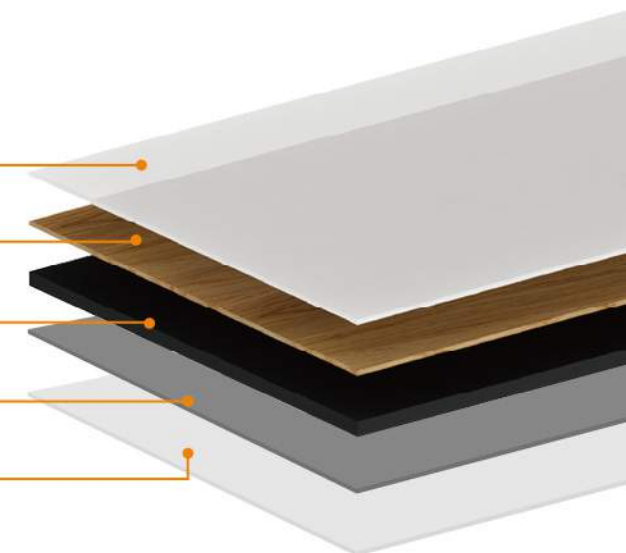
Aluminium Oxide Layer

Decorative Paper

Diamond SPC Core

Balance Paper

IXPE Pad (Optional)



Size	1220 x 180mm, 600 x 300mm
Thickness	4.2mm, 5.0mm
Overlayer	AC1-AC5

- EVA & IXPE & Cork attachment available
- Easy & strengthened locking system



ANY ROOM AT,
BELOW OR ABOVE GROUND LEVEL



BATHROOM FRIENDLY



CLICK SYSTEM



100% WATERPROOF



WARM TO THE TOUCH



ANTI SLIP



EASY CLEAN

ADVANTAGES

- 100% recyclable & more green material than PVC
- No harm to the soil, ecological health
- No smell, no toxicity to human body
- 25% Lighter than PVC Flooring, lower transportation cost



ECOTEC

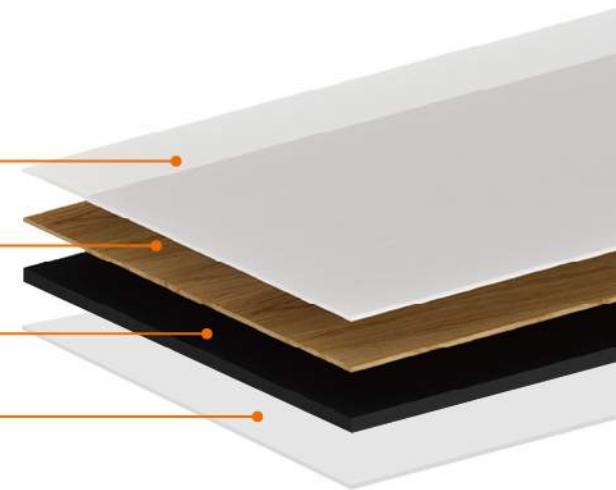
Your desired PVC-Free Flooring

PVC Free Wearlayer

PVC Free Decor Film

PVC Free Board

PVC Free Accoustic Underlayment



Size	1221 x 180mm, 600 x 300mm
Thickness	4.2mm, 5.0mm
Overlayer	0.15mm - 0.30mm

- EVA & IXPE & Cork attachment available
- Easy & strengthened locking system



ANY ROOM AT,
BELOW OR ABOVE GROUND LEVEL



BATHROOM FRIENDLY



CLICK SYSTEM



100% WATERPROOF



WARM TO THE TOUCH



ANTI SLIP



EASY CLEAN

SUPER PROTECT

Scratch Resistance & Scuff Resistance & Stain Resistance

STAIN GUARD & SCRATCH RESISTANT



IT'S NOT JUST ONE THING



CHILD FRIENDLY

Children's activities can often lead to the use of crayons or accidental spillages, which are no longer an issue. These can be wiped clean with a little bit of soapy water for a stress-free clean up.

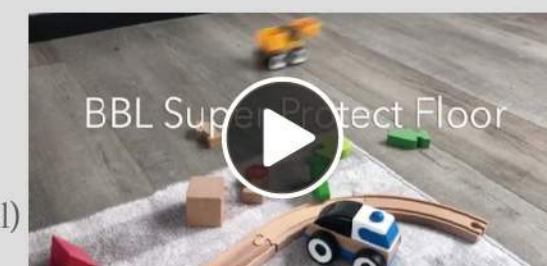


PET-FRIENDLY

Perfect for pet owners whose pets frequently come back with muddy paws from a morning walk, the Super Protect range is not only pet-friendly but scratch resistant too. Make claw marks a thing of the past!



Scan the QR code to watch our product video or enter the URL
(<https://www.bblflooring.com/h-col-225.html>)



What makes End-consumer complain about SPC surfaces?

Scratch!

Micro-Scratch!

What kind of Scratch brings the real headache?

Why?

Most of the real life scenarios for scratch is **Micro-Scratch**



High-Heeled Shoes



Brooms And Mops Cleaning



Sand On Shoes



Pet Scratch



Indoor Basketball



Electric Toy Car



Furniture Movement



Chair Movement

Super Protect Plus is New Generation of regular anti-micro-scratch coating

Coating	Martindale Pilling Tester /Test Weight (ISO12974)	Class	Martindale Pilling Tester /Test Weight (ISO12974)	Class	Conclusion
Super Protect Plus - Super Anti-micro-scratch coating	4 N	Class 1	38N	Class 1-2	Good-Performed
Regular Anti-micro-scratch coating	4 N	Class 1	38N	Class 4-5	Under-Performed
Regular Coating	4 N	Class 3	38N	Class 5	Under-Performed

Remark 1: 38N test weight is more close to real life scenario

Remark 2: Class 1-2 indicates No Visible Scratching Mark

Remark 3: Class 3 indicates Clear Scratching Mark

Remark 4: Class 4-5 indicates Very Clear Scratching Mark

Super protect plus is
9 times
better than regular
anti-micro-scratching coating

SUPER PROTECT PLUS



Anti-Micro-Scratch
Anti-Stian
Anti-Bacterial

Most durable performance system provides excellent and stain resistance on our *SUPER PROTECT PLUS* Floor.



Anti-Bacterial

Health and safety have the highest priority of all, whether it's at home, at work or during leisure time.

With the anti-bacterial surface from Super Protect PLUS Floor, you can offer your customers safety and ensure all-round well-being.

Super Protect Plus is a super functional coating that can enhance anti-micro-scratch, stain-resistant and anti-bacterial properties, coupled with protected SPC, we can truly live and enjoy our home without worrying about the problems caused by the floor.

ESP - EXTREMELY SUPER PROTECTION TECHNOLOGY



Your desired **sparkling** Vinyl flooring

Let's witness the
Magic time of

sparkling floor



Scan QR Code View Video



WE ♥ OUR PETS



PET-FRIENDLY

Perfect for pet owners whose pets frequently come back with muddy paws from a morning walk, the Super Protect range is not only pet-friendly but scratch resistant too. Make claw marks a thing of the past!



WE ♥ OUR CHILDREN



WE ♥ OUR FAMILY



CHILD-FRIENDLY

Children's activities can often lead to the use of crayons or accidental spillages, which are no longer an issue. These can be wiped clean with a little bit of soapy water for a stress-free clean up.



FAMILY-FRIENDLY

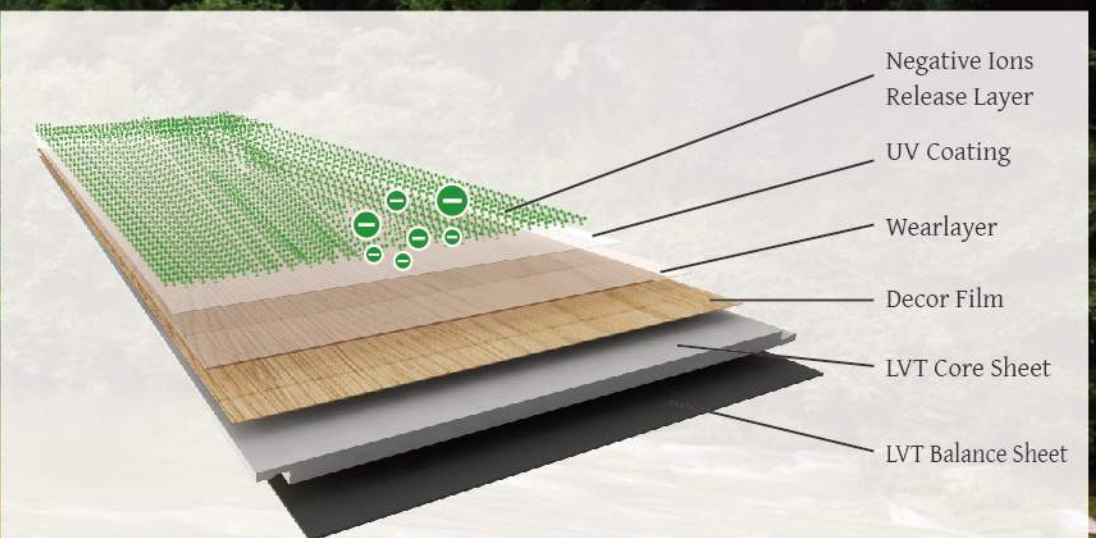
Health and safety is the highest priority of family, whether it is at home, at work or during leisure time. With the Anti-Bacterial Functional Floor from BBL, you can offer your family safety and ensure all-round well being.

NEGATIVE ION TEC.

As you know, Home furniture and building materials at everyone's home release continually some extent of formaldehyde and other volatile organic compounds, including Most of the odors, bacteria, smoke, etc. in the air, they are all positively charged and we call them positive Ions, which are harmful to human health.

Under normal temperature and normal conditions, water and oxygen in the air cannot be negatively charged to negative ions. However, under the action of strong electromagnetic field, this kind of transformation occurs.

The reason why BBL's Negative Ion Tec. floor can produce negative ions is that during the production process, a layer of material with positive and negative electrodes is attached to the floor surface, which is called negative ion catalyst (common name is tourmaline). The water in the air enters the electromagnetic field formed by the positive and negative electrodes. , it will turn into negative ions, which can be neutralized by the positive Ions until there is no charge, and make the air purified.



Hill top
-1980 per cm³



Waterfall
-7070 per cm³



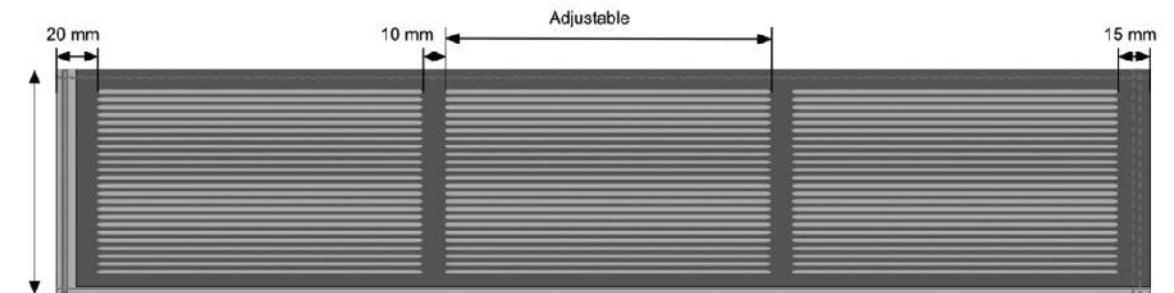
Negative Ion Tec. Floor
-1000 per cm³

**EXAMINATION ON
CONCENTRATION OF NEGATIVE IONS**

WHAT IS LITEBACK?

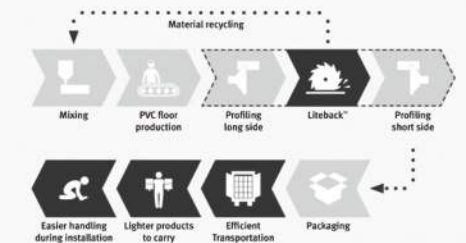
LITEBACK®

Liteback® is a core technology for thermoplastic flooring, i.e. LVT/SPC/WPC.



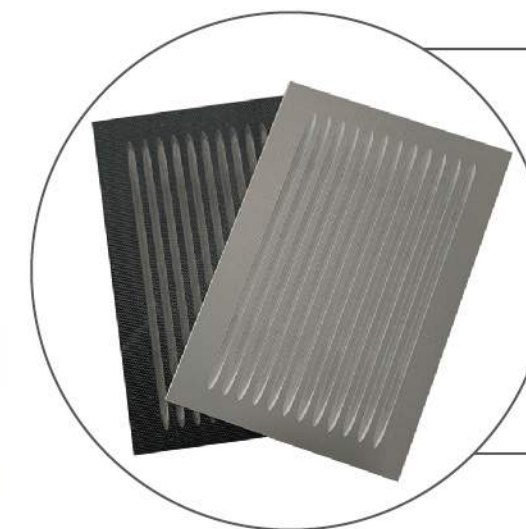
How does it work?

By using a grooving unit, grooves are milled on the backside of the floorboard. The grooving unit can be integrated in the regular production process thereby eliminating the need for extra handling of the panels. The material that removed in the process is recycled back into the production process, thereby reducing material consumption with up to 10-15%.



Data brings you closer to Liteback®.

In 2017, sales of LVT/SPC/WPC lock floor in Europe exceeded 60 million square meters. Imagine how much benefit these floors would bring if they all used Liteback® core technology. Valinge did a calculation and estimated the impact: let the data speak.



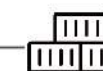
117000 Tons

Increasing the utilization rate of raw materials and saving 117000 tons of raw materials



4800 Trucks

Savings in raw materials greatly reduce the amount of raw materials transported to production workshops.



3400 Containers

Lighter products reduce 3,400 shipping containers and 1,550 trailers from the supply chain per year.



>80000 Tons

With the reduction of raw materials consumption and freight frequency, CO2 emissions will be reduced by more than 80,000 tons, equivalent to the annual CO2 emissions of 56,000 cars.



RANDOM WIDTH SERIES

With random width treatment, plus painted bevel treatment, makes your designed floor more realistic and special.

Any design can be made in random width!

SPC Size: 1220 x 120/150/180mm
1220 x 123/175/227mm
1500 x 123/175/227mm

Thickness: 4.2-8.0mm

WPC Size: 1217 x 124/174.5/225mm
1500 x 124/174.5/225mm

Thickness: 5.5-8.5mm

Wearlayer: 0.2-1.0mm

UV-coating, painted bevel

Easy & strengthened locking system

RANDOM WIDTH SERIES



BBL99531-10



ENDLESS

Endless series is amazing, It's beautifully refined graining and natural under glow offers a rustic sophistication that can compliment a wide range of looks in any home including Modern, Traditional and Rustic, what's more, it will be a 10 planks repeat collection, which bring more real feeling.



BBL-ED001





PAINTED BEVEL



ANTIQUE WOOD TEXTURE



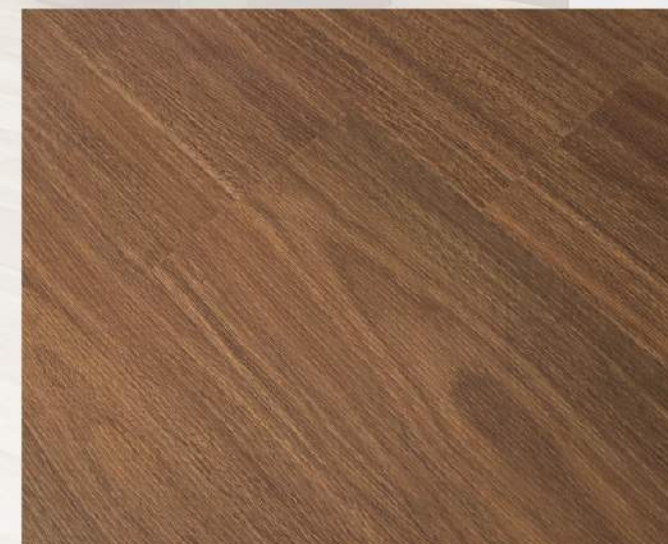
CRYSTAL TEXTURE



CARPENTER HANDSCRAPED TEXTURE



RANDOM EIR-911



RANDOM EIR- B190



RANDOM EIR-88068

TEXTURE
FOR
SELECTION



EIR PATTERN

BBL911-3



BBL911-1



BBL958L-4



BBL912-1



BBL912-5



BBL911-5



BBL923-1



BBL923-6



BBL9367-3



BBL904-1



BBL9367-10



BBL904-2



BBL904-6

LENGTH	CODE				
	BBL911	BBL912	BBL923	BBL9367	BBL904
1000mm					
1300mm	★	★	★	★	★
1500mm					
1800mm					

Remark: Cylinder Length



BBL88068-7



BBL88068-2



BBL88068-5



BBL88068-8



BBL33001-1



BBL33001-3



BBL33001-9



BBL33003-1



BBL33003-5



BBL33003-10

LENGTH	CODE		
	BBL88068	BBL33001	BBL33003
1000mm			
1300mm			
1500mm	★	★	★
1800mm			

Remark: Cylinder Length



BBL33004-1



BBL33004-4



BBL33004-8



BBL33004-12



BBL33037-2



BBL33037-13



BBL973L-6



BBL973L-4



BBL973L-12

LENGTH	CODE		
	BBL33004	BBL33037	BBL973L
1000mm			
1300mm			
1500mm	★	★	★
1800mm			

Remark: Cylinder Length



WOOD
PATTERN

BBL979-7



BBL978L-2



BBL978L-6



BBL978L-1



BBL979XL-1



BBL979XL-4



BBL979XL-7



BBL980XL-1



BBL980XL-5



BBL981XL-1



BBL981XL-5



BBL981XL-6



BBL984L-1



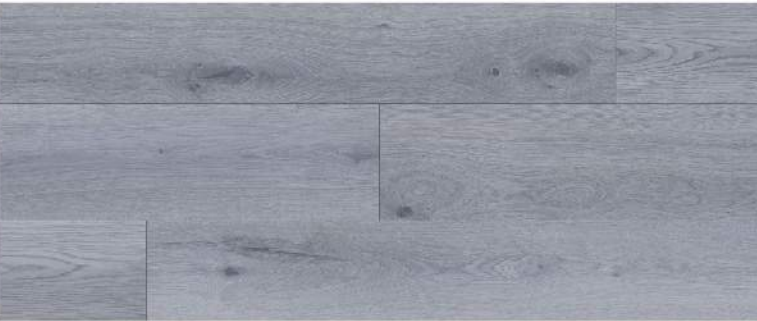
BBL984L-4

LENGTH	CODE				
	BBL978L	BBL979XL	BBL980XL	BBL981XL	BBL984L
1000mm					
1300mm					
1500mm	★				★
1800mm		★	★	★	

Remark: Cylinder Length



BBL985L-3



BBL985L-9



BBL985L-1



BBL986L-1



BBL986L-4



BBL986L-10



BBL987L-1



BBL987L-4



BBL988L-3



BBL988L-6



BBL988L-1



BBL989L-1



BBL989L-5



BBL989L-7

LENGTH	CODE				
	BBL985L	BBL986L	BBL987L	BBL988L	BBL989L
1000mm					
1300mm					
1500mm	★	★	★	★	★
1800mm					

Remark: Cylinder Length



BBL990L-1



BBL990L-7



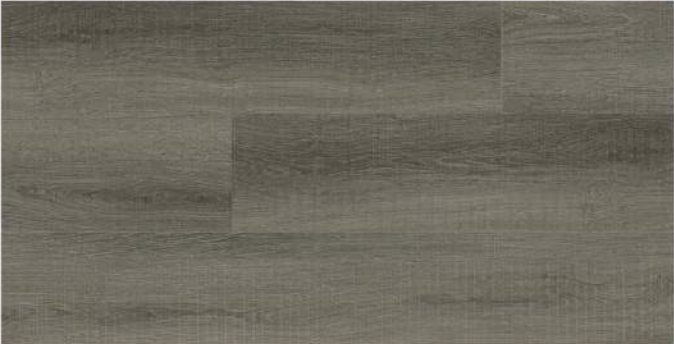
BBL990L-10



BBL993L-1



BBL993L-7



BBL993L-9



BBL994L-1



BBL994L-7



BBL995L-9



BBL995L-1



BBL995L-18



BBL2023L-1



BBL2023L-7

LENGTH	CODE				
	BBL990L	BBL993L	BBL994L	BBL995L	BBL2023L
1000mm					
1300mm					
1500mm	★	★	★	★	★
1800mm					

Remark: Cylinder Length



BBL2024L-4



BBL2024L-13



BBL2024L-1



BBL2025WL-1



BBL2025WL-5



BBL2025WL-11



BBL2101L-2



BBL2101L-5



BBL2102L-4



BBL2102L-2



BBL2102L-7



BBL2103L-1



BBL2103L-3



BBL2103L-5

LENGTH	CODE				
	BBL2024L	BBL2025WL	BBL2101L	BBL2102L	BBL2103L
1000mm					
1300mm					
1500mm	★	★	★	★	★
1800mm					

Remark: Cylinder Length



BBL2104L-1



BBL2104L-4



BBL2104L-9



BBL2105L-1



BBL2105L-6



BBL2105L-8



BBL2106L-1



BBL2106L-5



BBL2106L-9



BBL2107L-1



BBL2107L-4



BBL2107L-5

LENGTH	CODE			
	BBL2104L	BBL2105L	BBL2106L	BBL2107L
1000mm				
1300mm				
1500mm	★	★	★	★
1800mm				

Remark: Cylinder Length



BBL2108L-3



BBL2108L-7



BBL2108L-1



BBL2109L-1



BBL2109L-7



BBL2109L-9



BBL2110L-1



BBL2110L-3



BBL2110L-5



BBL2111L-3



BBL2111L-4



BBL2111L-7



BBL2111L-8

LENGTH	CODE			
	BBL2108L	BBL2109L	BBL2110L	BBL2111L
1000mm				
1300mm				
1500mm	★	★	★	★
1800mm				

Remark: Cylinder Length



BBL2112L-1



BBL2112L-4



BBL2112L-7



BBL2113L-5



BBL2113L-6



BBL2113L-8



BBL2114L-1



BBL2114L-4



BBL2114L-6



BBL2115L-1



BBL2115L-6



BBL2115L-8

LENGTH	CODE			
	BBL2112L	BBL2113L	BBL2114L	BBL2115L
1000mm				
1300mm				
1500mm	★	★	★	★
1800mm				

Remark: Cylinder Length

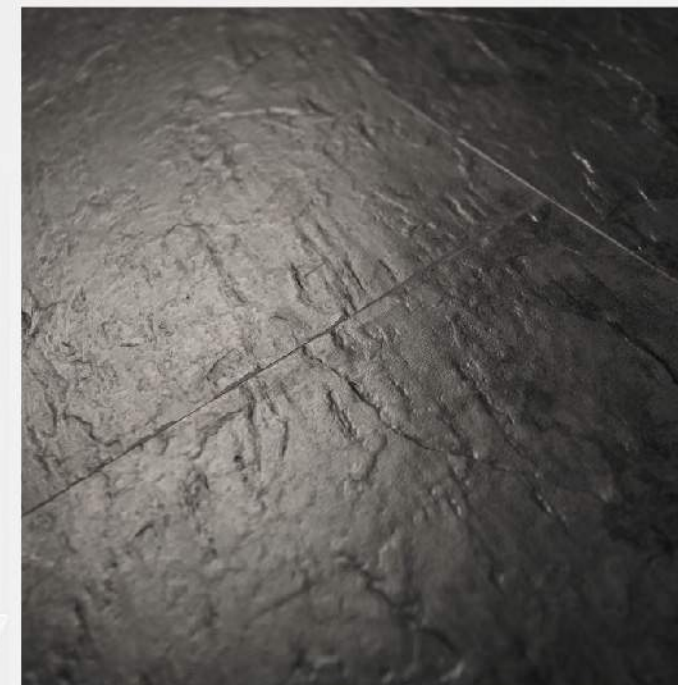


TILE
TEXTURE

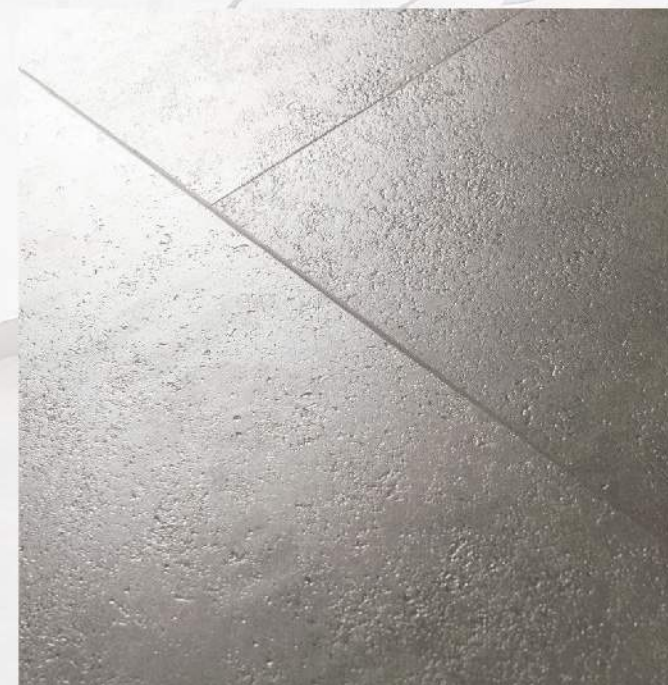
TEXTURE FOR SELECTION



BUMPY FINISH



CLASSIC SLATE



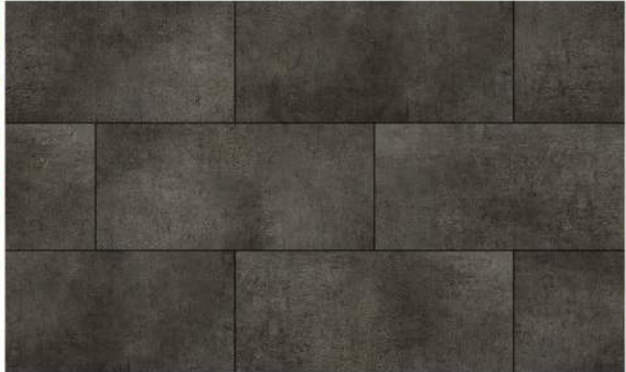
GRANITE STRUCTURE



WHITE MARBLE FINISHING



BBL918-1



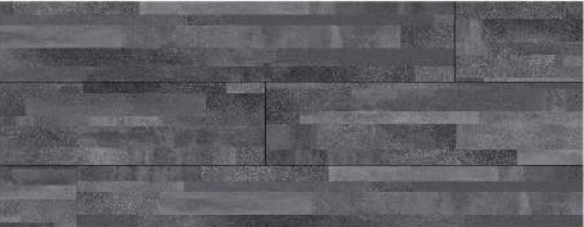
BBL918-3



BBL918-6



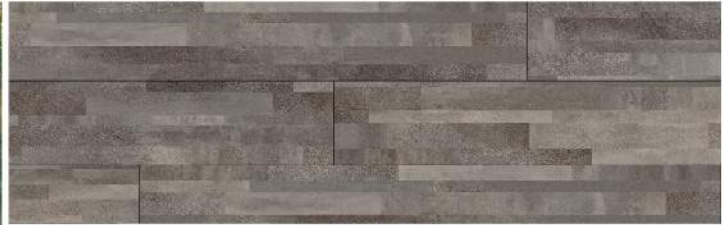
BBL920-1



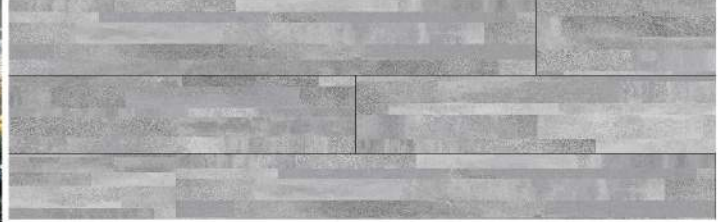
BBL920-4



BBL920-5



BBL920-7



BBL920-9



BBL922-1



BBL922-3



BBL922-6



BBL922-7



BBL938-2



BBL938-1



BBL938-4



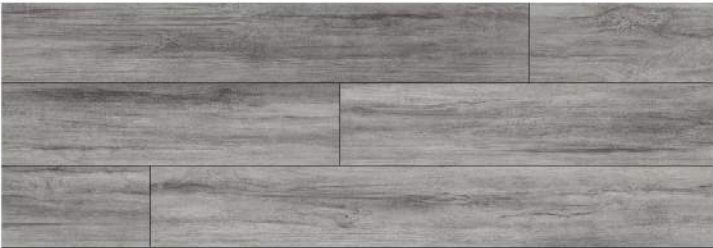
BBL938-5

LENGTH	CODE			
	BBL918	BBL920	BBL922	BBL938
1000mm				
1300mm	★	★	★	★
1500mm				
1800mm				

Remark: Cylinder Length



BBL939-1



BBL939-4



BBL939-6



BBL950-1



BBL950-2



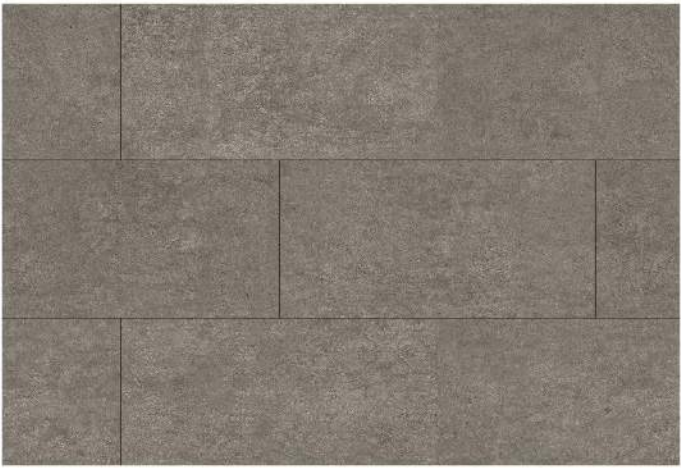
BBL950-3



BBL951-1



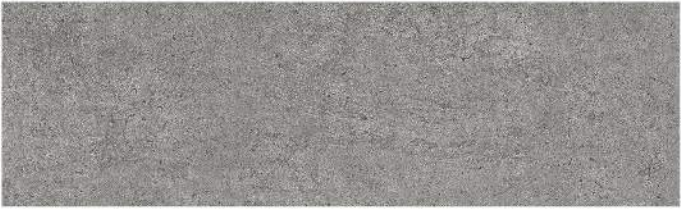
BBL951-2



BBL951-6



BBL951-4

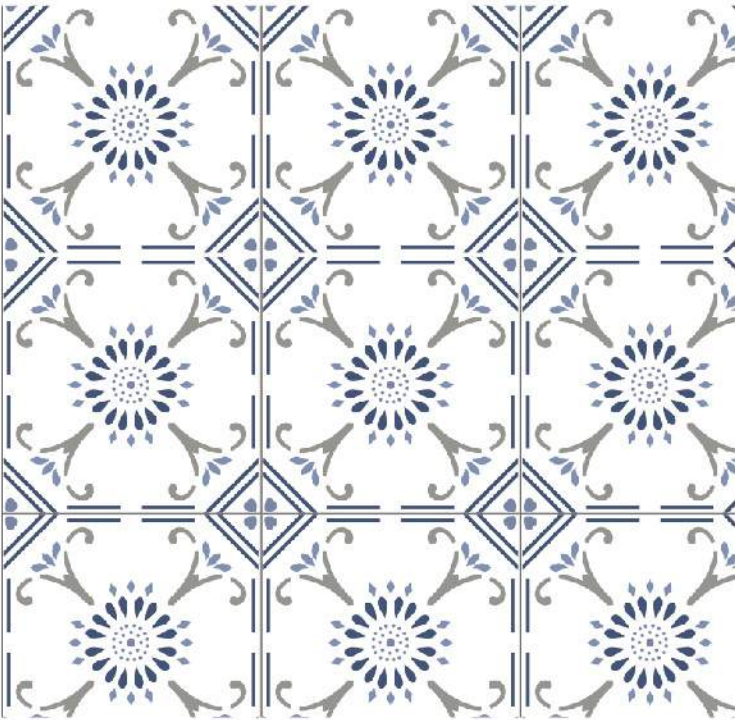


BBL951-7

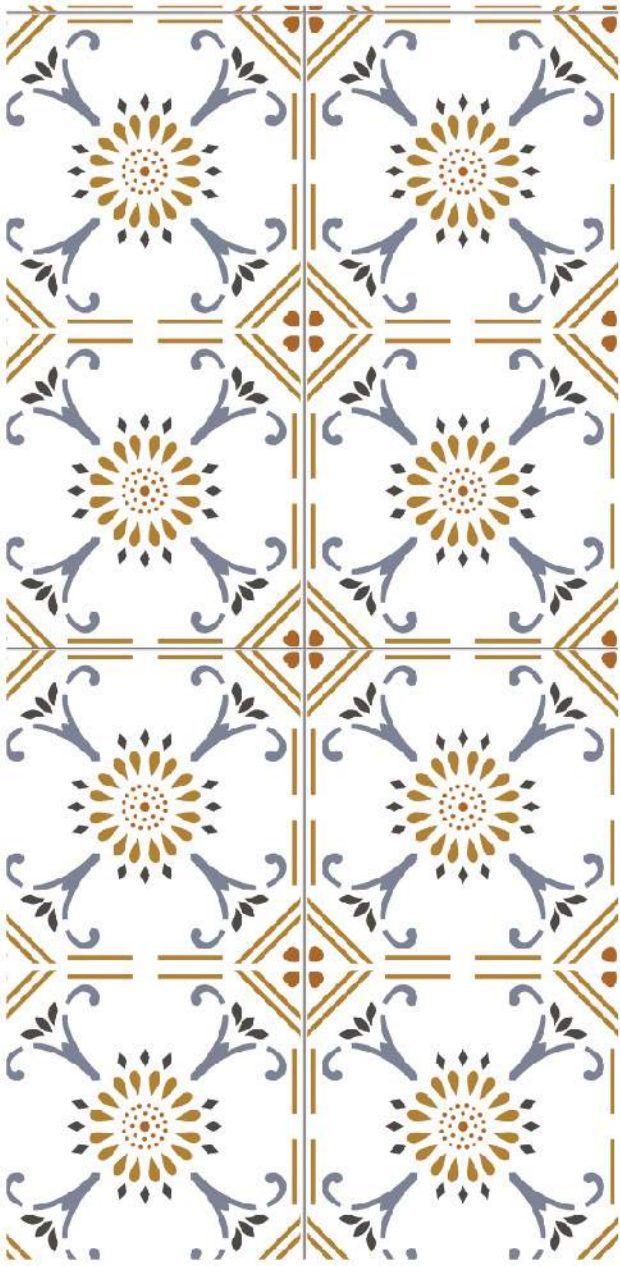


LENGTH	CODE		
	BBL939	BBL950	BBL951
1000mm			
1300mm	★	★	★
1500mm			
1800mm			

Remark: Cylinder Length



BBL982-1



BBL982-3



BBL982-8



BBL982-5



BBL983-6



BBL983-1



BBL983-2



BBL983-8



BBL983-7



BBL983-10

LENGTH	CODE	
	BBL982	BBL983
1000mm		
1300mm	★	★
1500mm		
1800mm		

Remark: Cylinder Length



BBL970-1



BBL970-2



BBL996-1



BBL996-6



BBL996-9



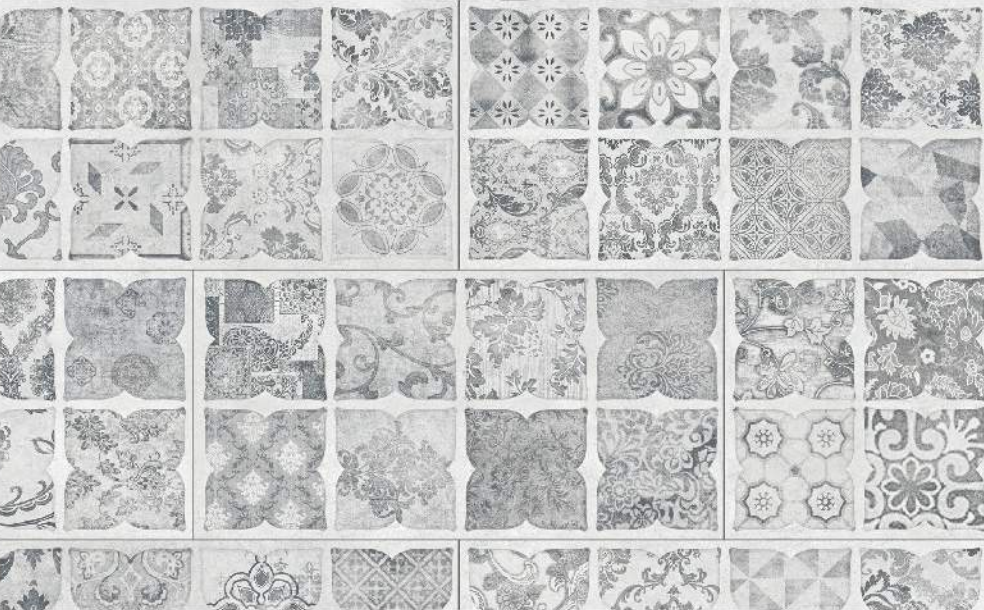
BBL997-1



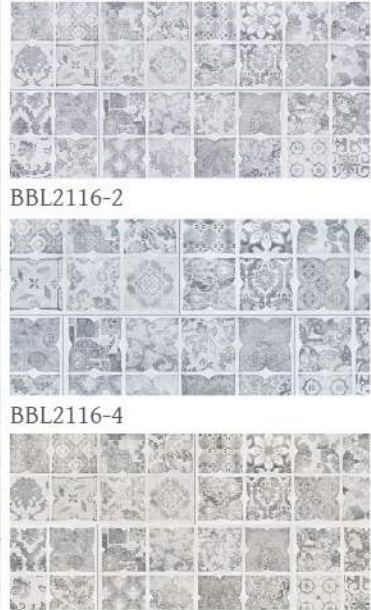
BBL997-7



BBL997-10



BBL2116-1



BBL2116-5

LENGTH	CODE			
	BBL970	BBL996	BBL997	BBL2116
1000mm				
1300mm	★	★	★	★
1500mm				
1800mm				

Remark: Cylinder Length

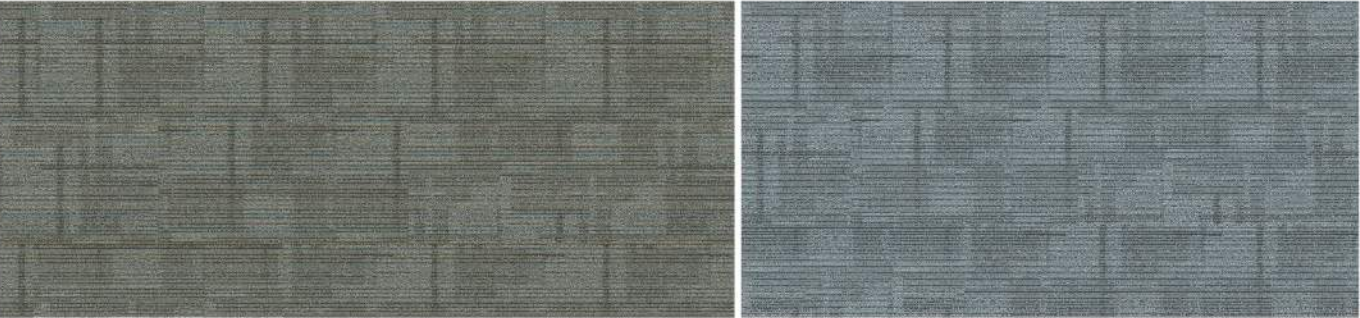


CARPET TEXTURE



BBL991L-2

BBL991L-3

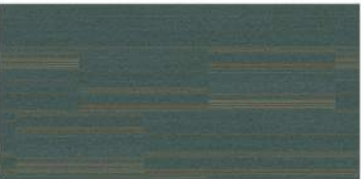


BBL991L-5

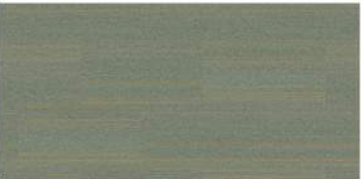
BBL991L-6



BBL992L-1



BBL992L-3



BBL992L-6



BBL992L-8

LENGTH	CODE	
	BBL991L	BBL992L
1000mm		
1300mm		
1500mm	★	★
1800mm		

Remark: Cylinder Length